

GENERATION III
MODULAR
MEZZANINE
INSTRUCTIONS

STANDARD GENERATION III MEZZANINE MODULES

FLOOR HEIGHTS OF MODULES		PERIMETER
8' 1-5/8"	10' 1-5/8"	DIMENSIONS
#90048	#91048	6'-0" x 8'-0"
#90072	#91072	6'-0" x 12'-0"
#90080	#91080	10'-0" x 8'-0"
#90120	#91120	10'-0" x 12'-0"

GENERAL ASSEMBLY INSTRUCTIONS FOR GENERATION III MEZZANINE

1. Clear floor area where mezzanine is to be installed.
2. Check floor plan of mezzanine and read assembly instructions.
3. Begin assembly by installing all support posts & exterior beams.
4. Install all diagonal braces on exterior corners of framework.
5. Assemble all interior beams and brackets.
6. Assemble stairway and fasten in place on mezzanine framework.
7. Install floor grating on entire mezzanine framing.
8. Plumb and square all mezzanine posts before anchoring to floor.
9. Assemble all railing, kickplates, and gates where required.
10. Check entire mezzanine to be sure all hardware is tightened.

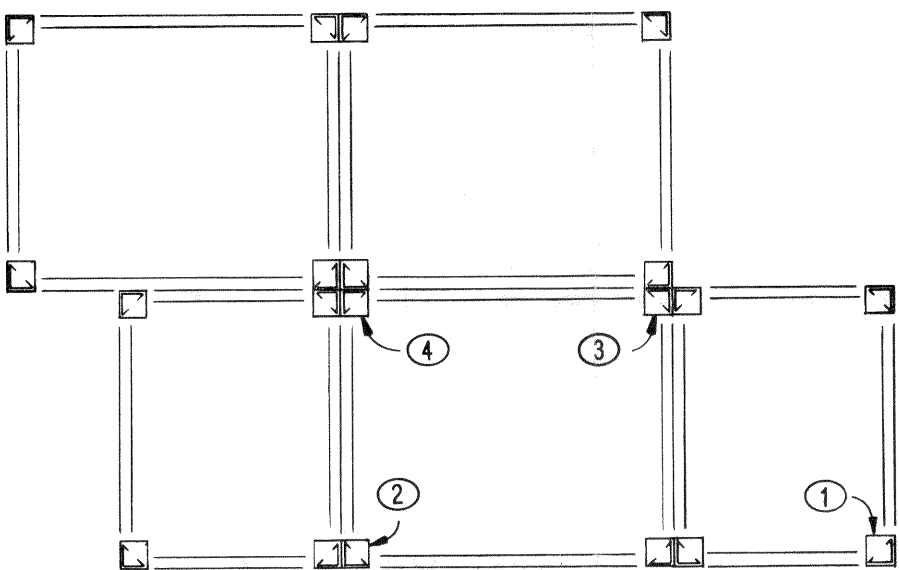
POSTS

POST FOR 8'-0" HIGH = #5208
POST FOR 10'-0" HIGH = #5210

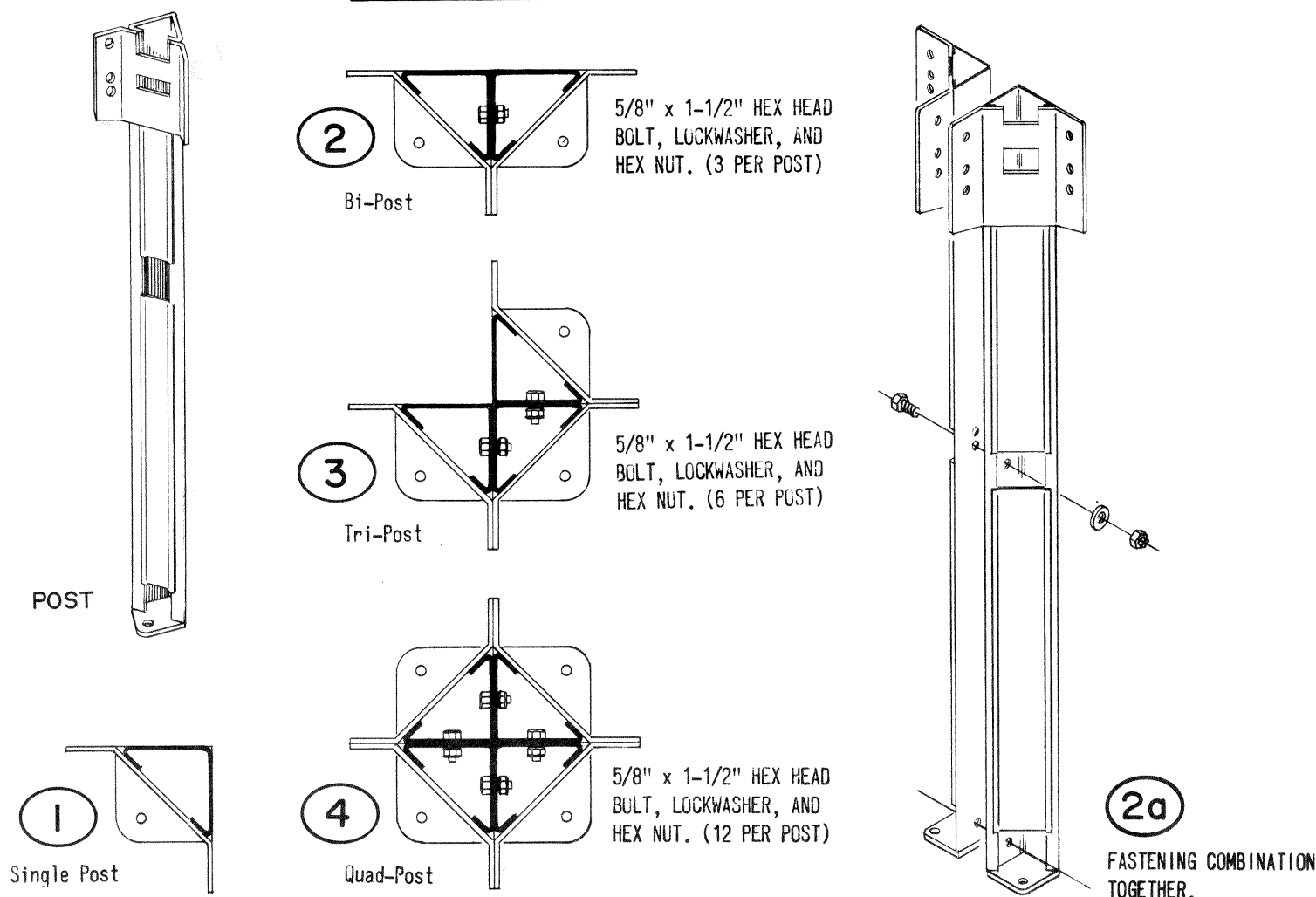
IMPORTANT NOTE

ALL POST MUST BE
PLUMB AND SQUARE PRIOR
TO ANCHORING TO FLOOR.

POST PLACEMENT



POST DETAILS



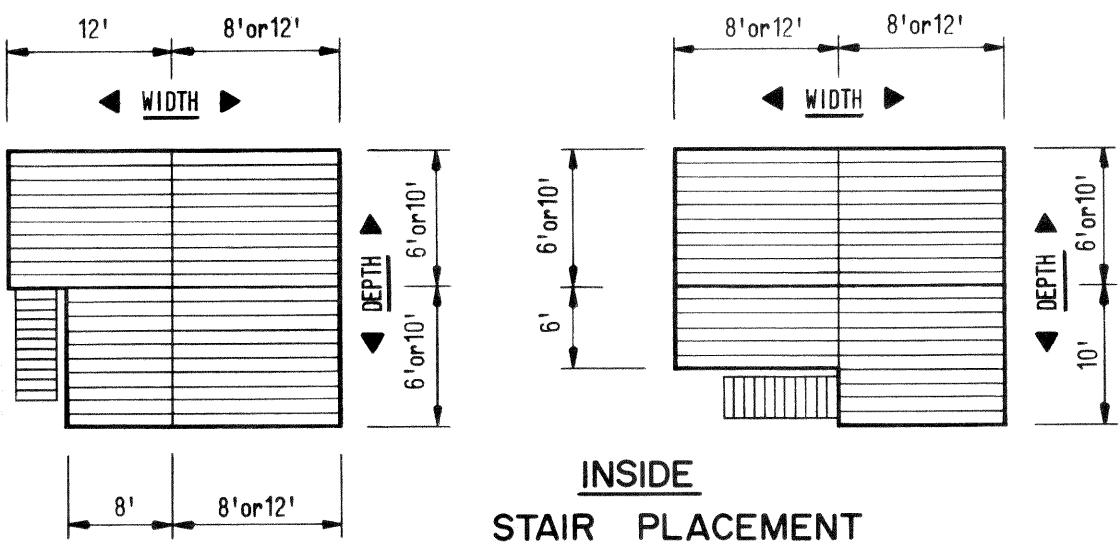
STAIRS

OUTSIDE
STAIR PLACEMENT

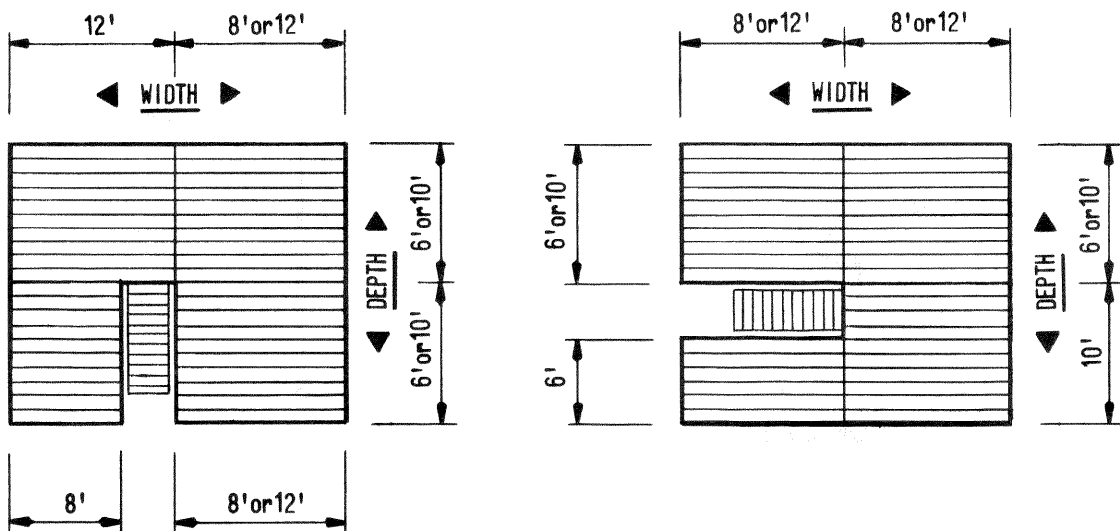
MEZZANINE MODULES SHOWN REPRESENT THE FIVE
STANDARD STAIRWAY LOCATIONS. STAIR
LOCATIONS MAY BE MOVED FROM ONE SIDE TO
THE OTHER AND FROM FRONT TO BACK.

STAIRWAY 936F11 FOR 8' HIGH
STAIRWAY 936F16 FOR 10' HIGH

936F11 SEE DRAWING #41334
936F16 SEE DRAWING #41466



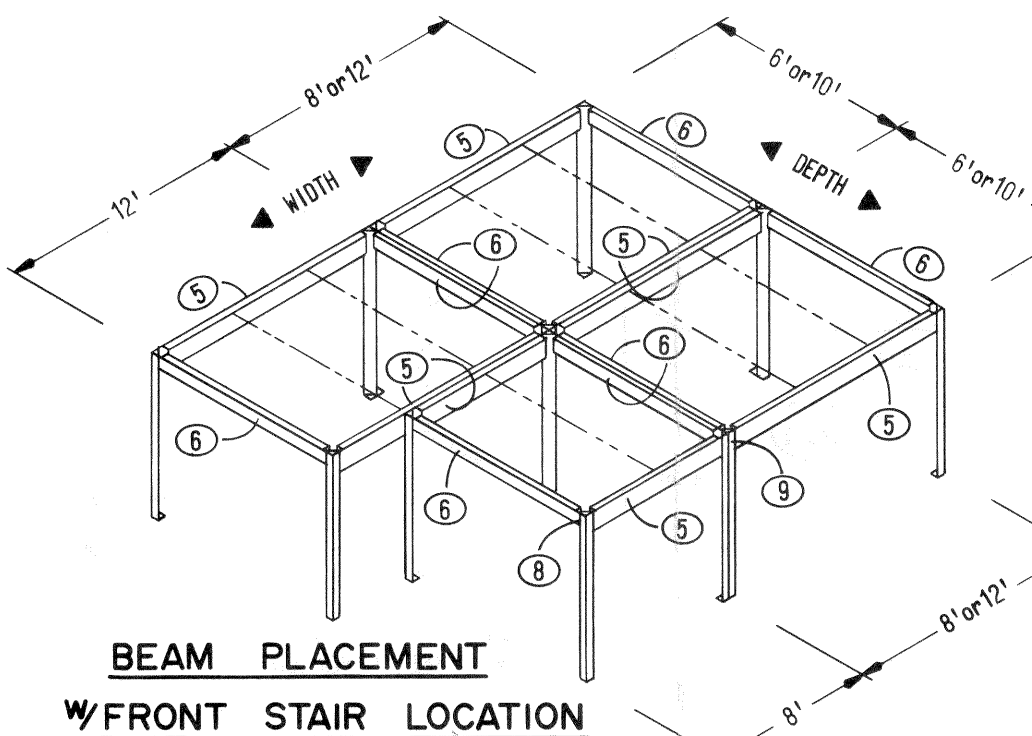
INSIDE
STAIR PLACEMENT



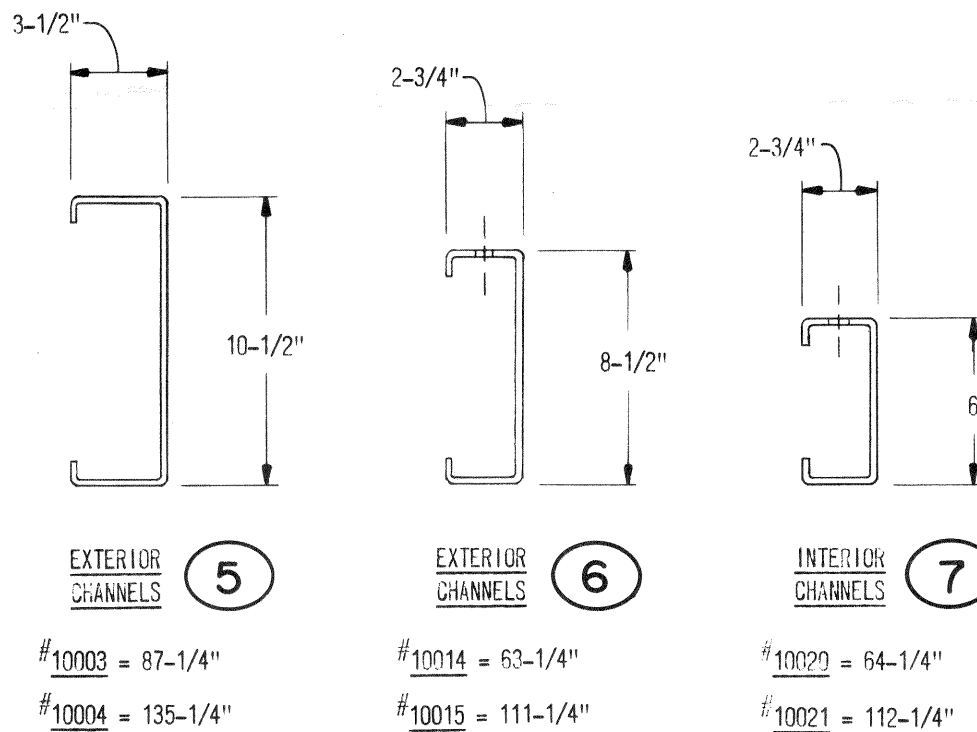
EXTERIOR BEAMS

PERIMETER FRAMING ASSEMBLY INSTRUCTIONS

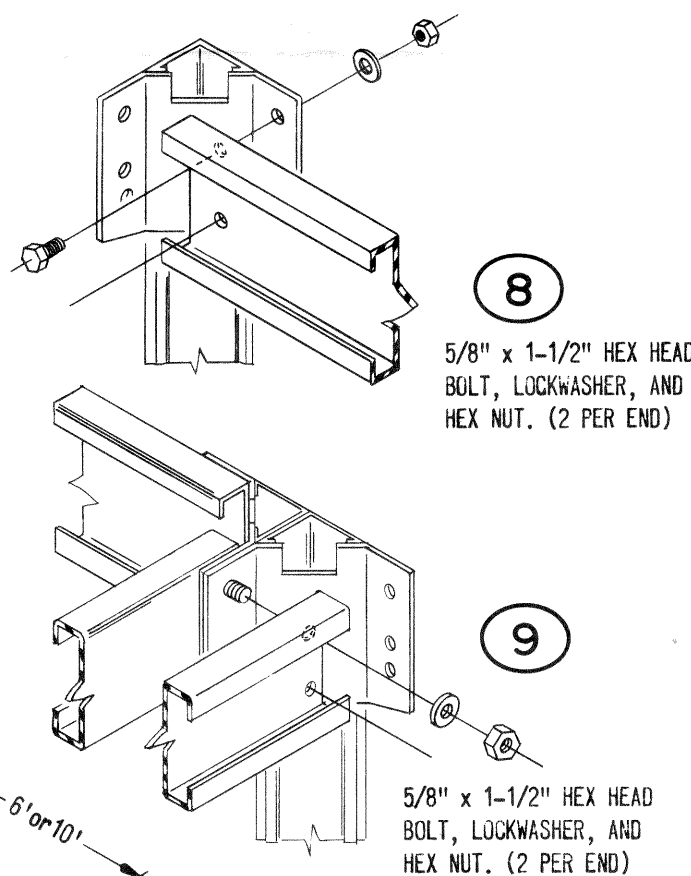
- Step 1. Bolt one Exterior Beam (10-1/2" channel) between top ends (inside) of two Single Posts. See DETAILS 5 & 8.
NOTE: Position bolt heads to inside of channel.
- Step 2. Repeat Step 1. Fasten bolts finger tight only.
- Step 3. Stand both assemblies upright with channels to the top and fasten two 8-1/2" high channels as shown in DETAIL 8.
NOTE: Flange of channel with row of holes to the top.
- Step 4. To add 2nd bay of framing, stand 2 Single Posts along side of assembled framing, remove nuts holding channel at top of post and slide bracket of 2nd Post in place over bolts and replace nuts. Do not tighten.
- Step 5. Fasten Posts side by side at bottom and center. DETAIL 2a.
- Step 6. Position Exterior Beam of same height channel already in place and fasten 'back to back' as shown in DETAIL 9.
If 'back to back' channels are 8-1/2" high, bolt together thru 1/2" long slots in vertical surface.
- Step 7. To complete 2nd bay of framing, repeat assembly steps 1 & 3.
- Step 8. Continue assembly of Perimeter Framing until complete.
- Step 9. Fasten two (2) Tubular Braces at each outer corner of completed perimeter framing. See DETAIL 13.



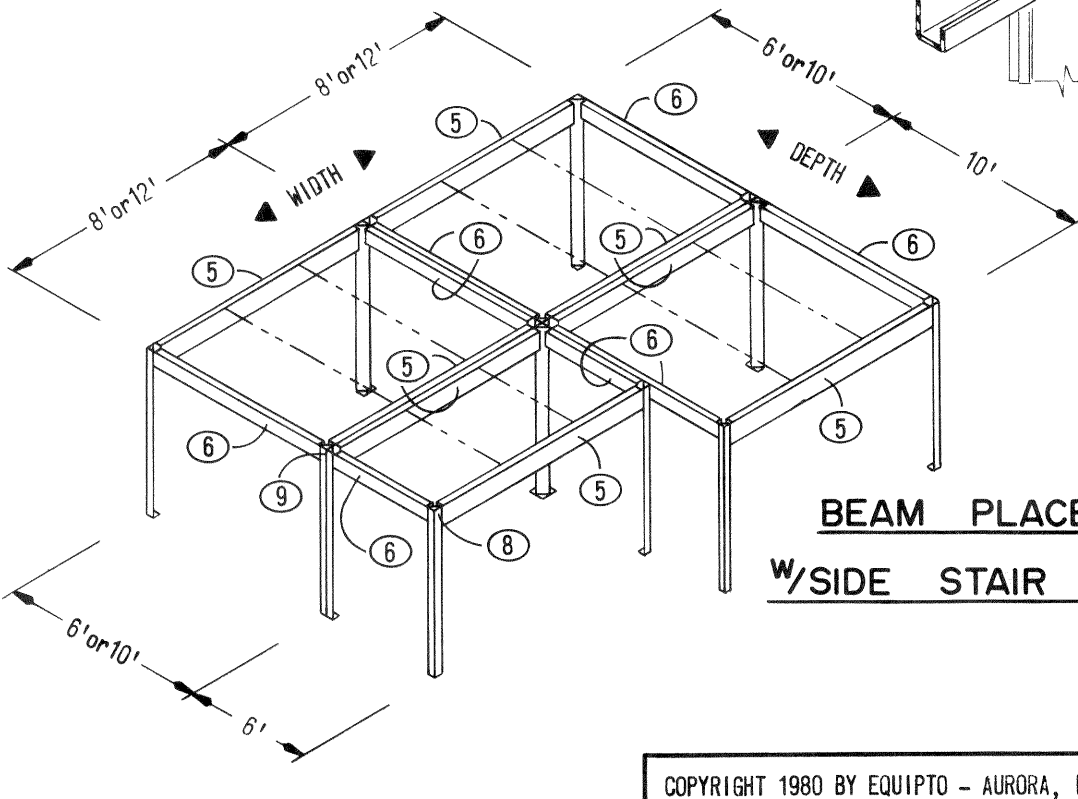
EXTERIOR & INTERIOR
BEAM IDENTIFICATION



EXTERIOR BEAM ASSEMBLY
STARTER & ADD-ON



BEAM PLACEMENT
W/SIDE STAIR LOCATION



INTERIOR BEAMS
& BRACES

INTERIOR BEAM ASSEMBLY

NOTE: Interior Beam Channels are 6" in height and have row of holes punched in top flange surface.

Step 1. Position Beam Brackets inside all 10-1/2" high exterior channels and fasten in place as shown in DETAIL 10. See DETAIL 11 for 'back to back' Beam Bracket assembly.

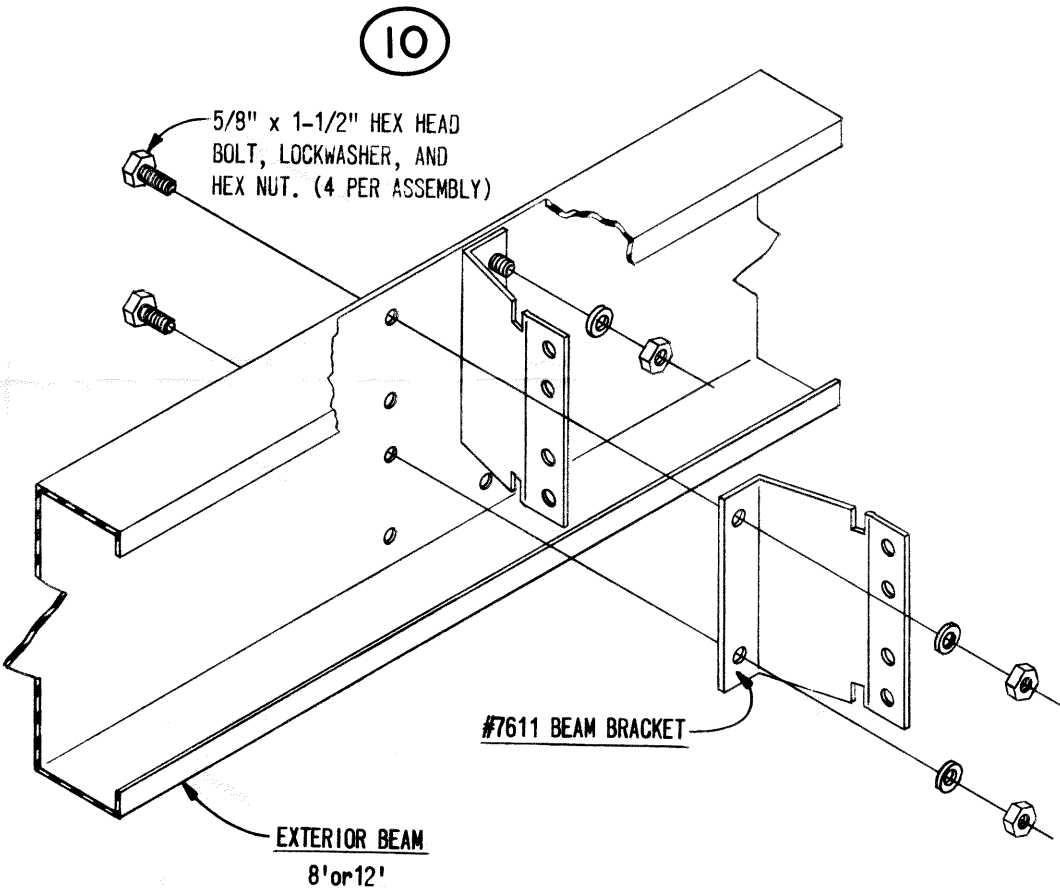
Step 2. Fasten Interior Beam Channels to beam brackets as shown in DETAIL 12. All Interior Beam Channels are to be installed in pairs with punched flanges turned upward.

Step 3. Fasten all 6" high channels 'back to back' thru 1/2" long slots in vertical surface with 5/16-18 x 3/4" long hex head bolts and lock nuts.

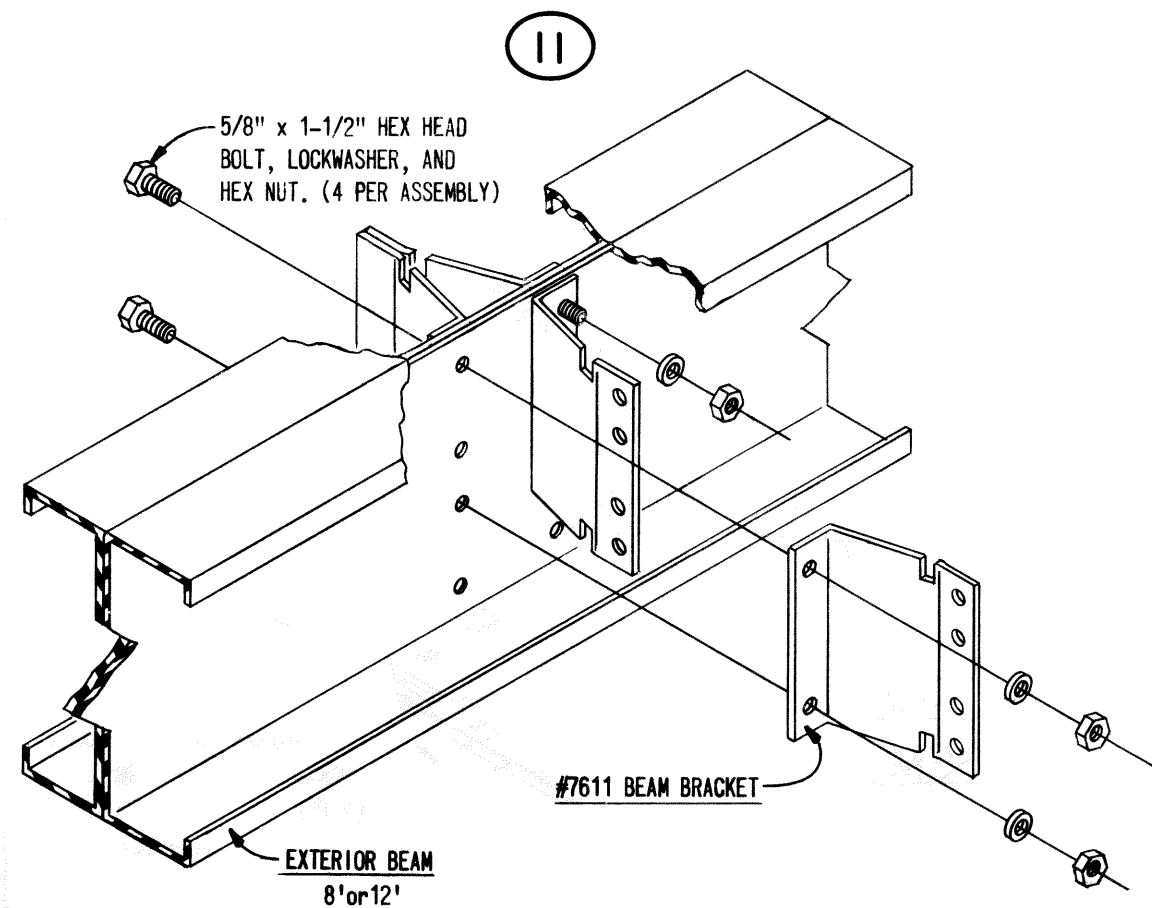
Step 4. Plumb and square all posts in frame assembly and fasten to floor. Floor anchors to be furnished by assembler.

IMPORTANT: Failure to anchor all posts to the floor will result in an unsafe mezzanine.

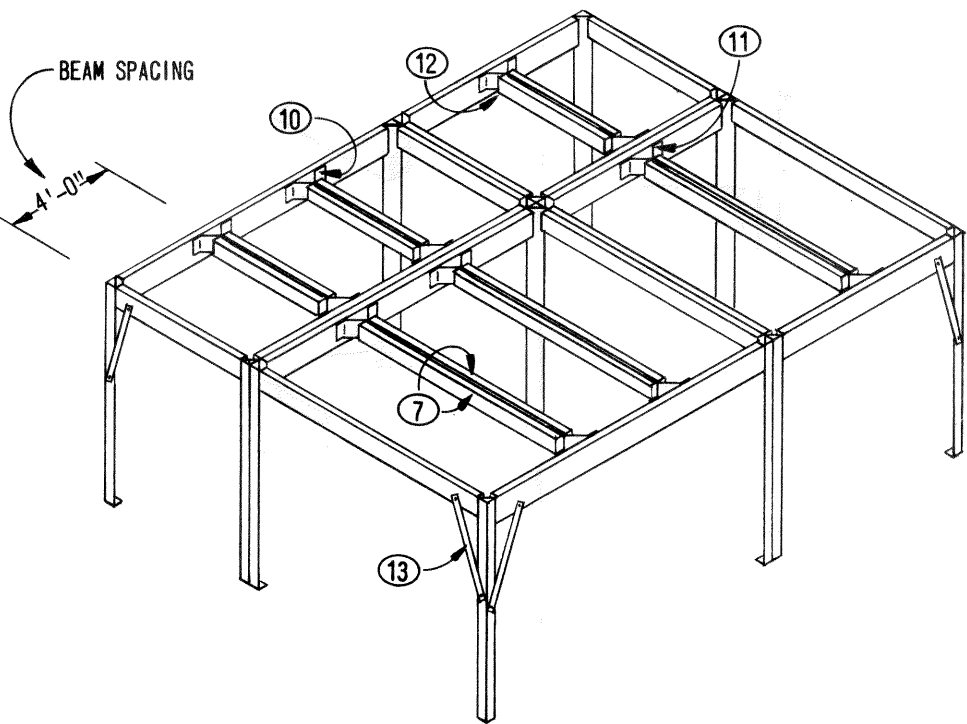
STARTER
BRACKET ASSEMBLY



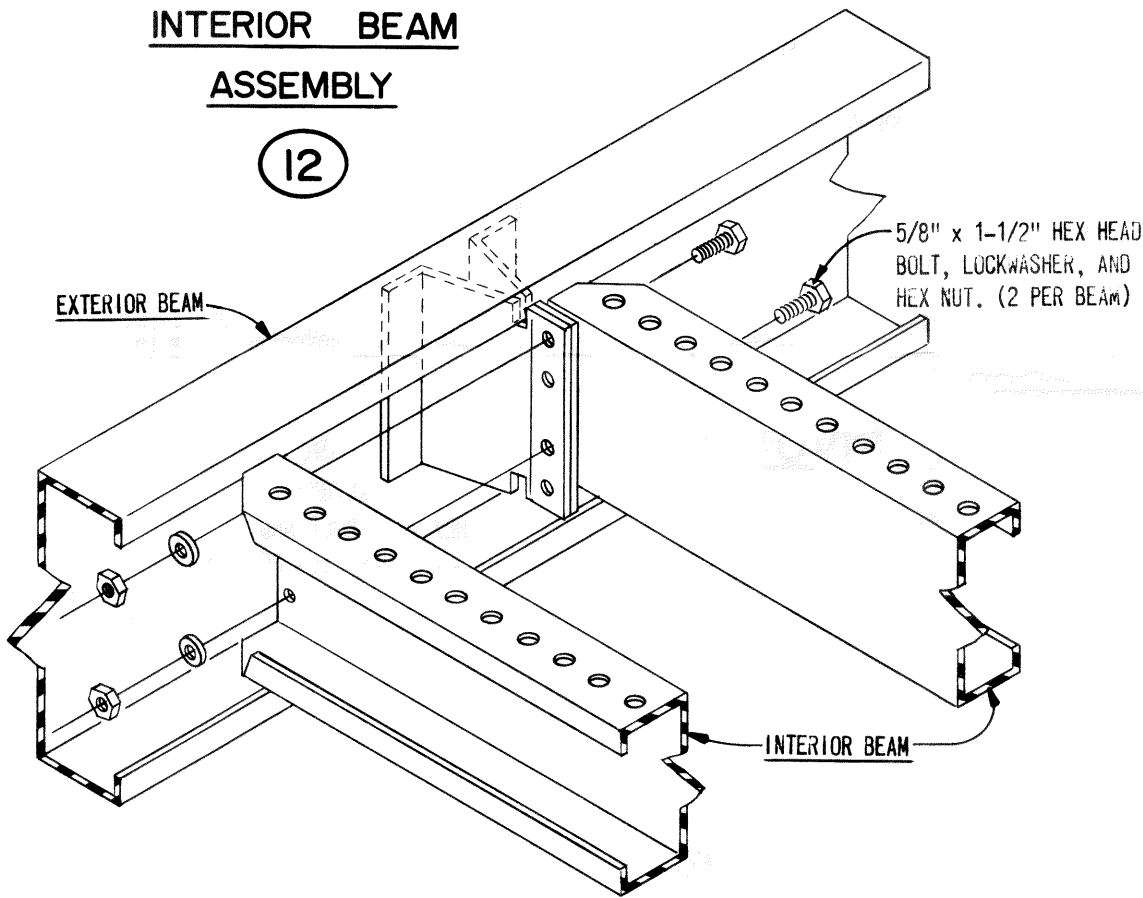
ADD-ON
BRACKET ASSEMBLY



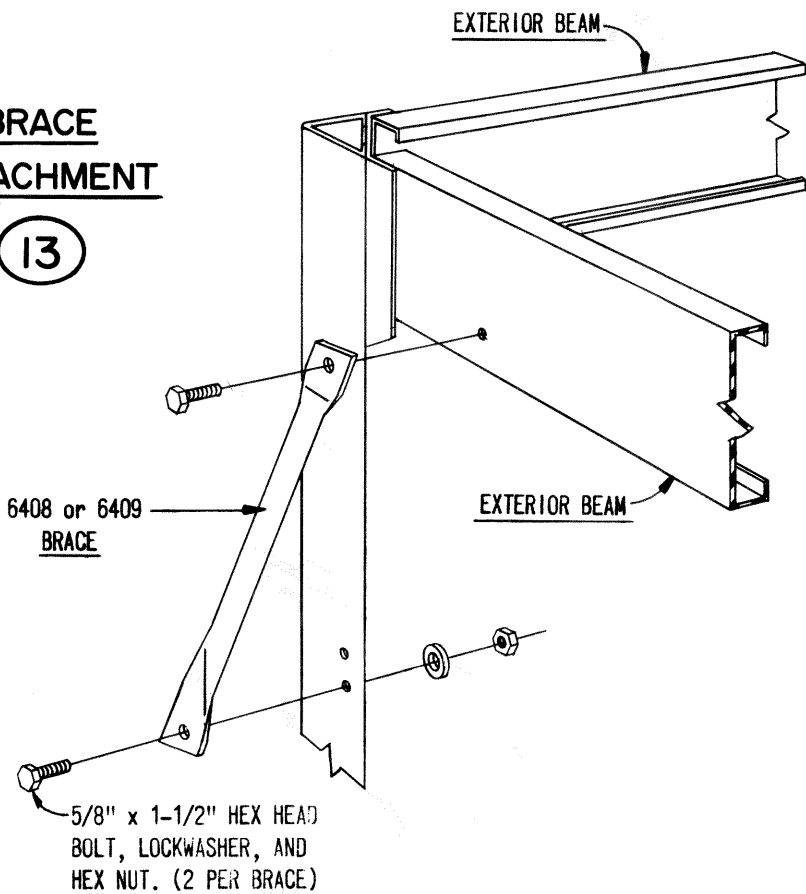
INTERIOR BEAM LOCATION



INTERIOR BEAM
ASSEMBLY

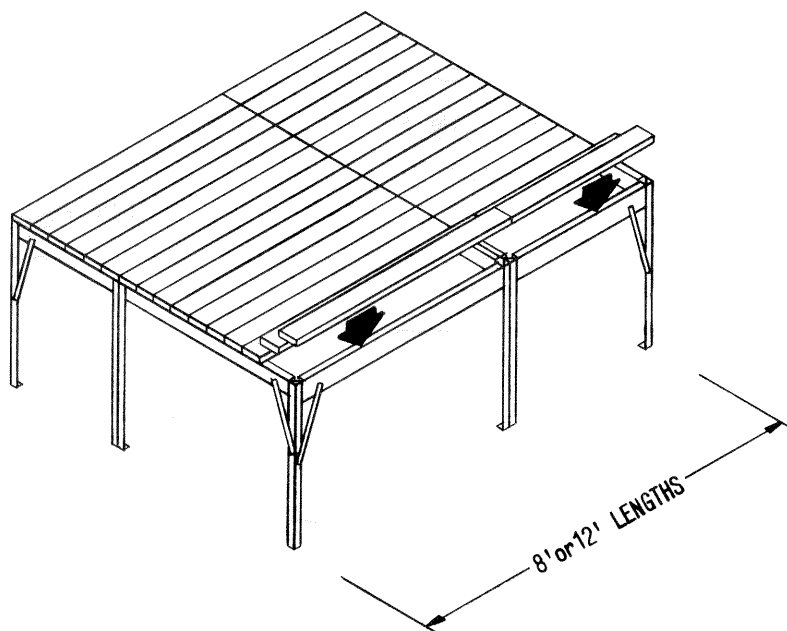


BRACE
ATTACHMENT



FLOORING

GRATING LOCATION



FLOOR GRATING ASSEMBLY

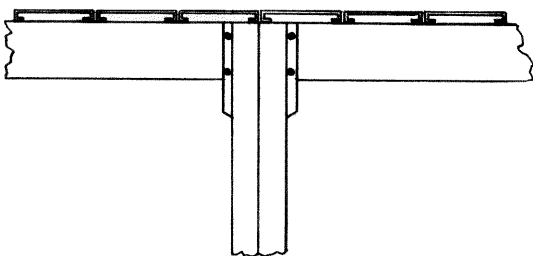
NOTE: All floor grating panel lengths are to be installed parallel with the 10-1/2" high floor support beams.

Step 1. Fasten the #9520 Grating Clip inside the top of all upright columns as shown in DETAIL 14. Be sure clips are positioned parallel with the 10-1/2" high beams. Tighten all bolts securely.

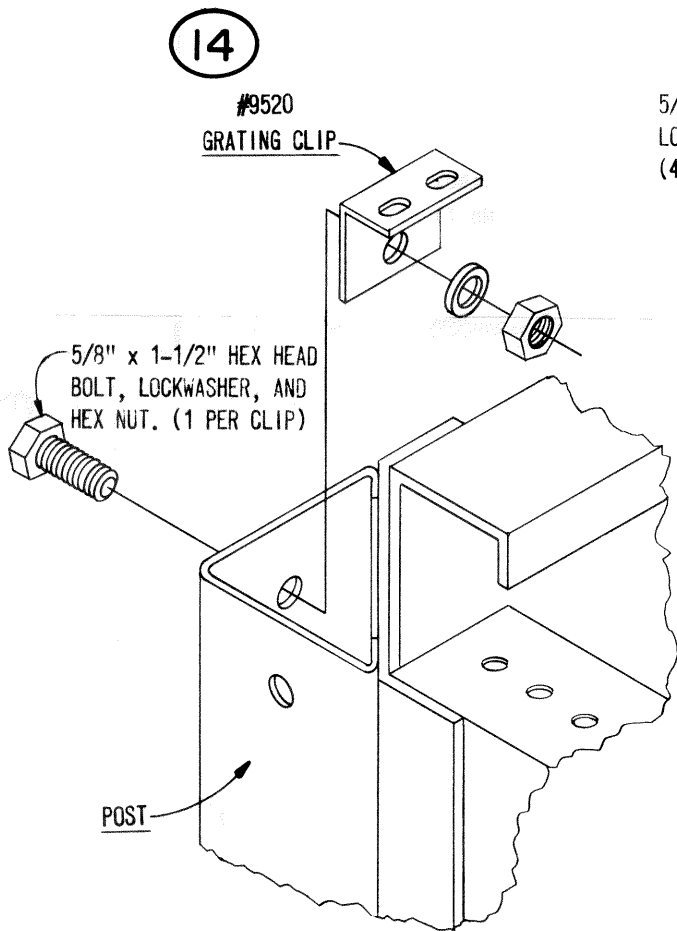
Step 2. Beginning on outer edge of framing, position grating panel and fasten ends of panel to punched beams with 5/16-18 x 5/8" Hex Head Bolts and Locknuts (4 per panel). Tighten all bolts after all panels are in place.

IMPORTANT: Mezzanine framing has been fabricated to assemble two or more modules in a row with the 8' and 12' bays in one direction and the 6' and 10' bays installed at 90° to that direction. Lengths of floor grating for this structure will then be installed parallel to one another in one direction.

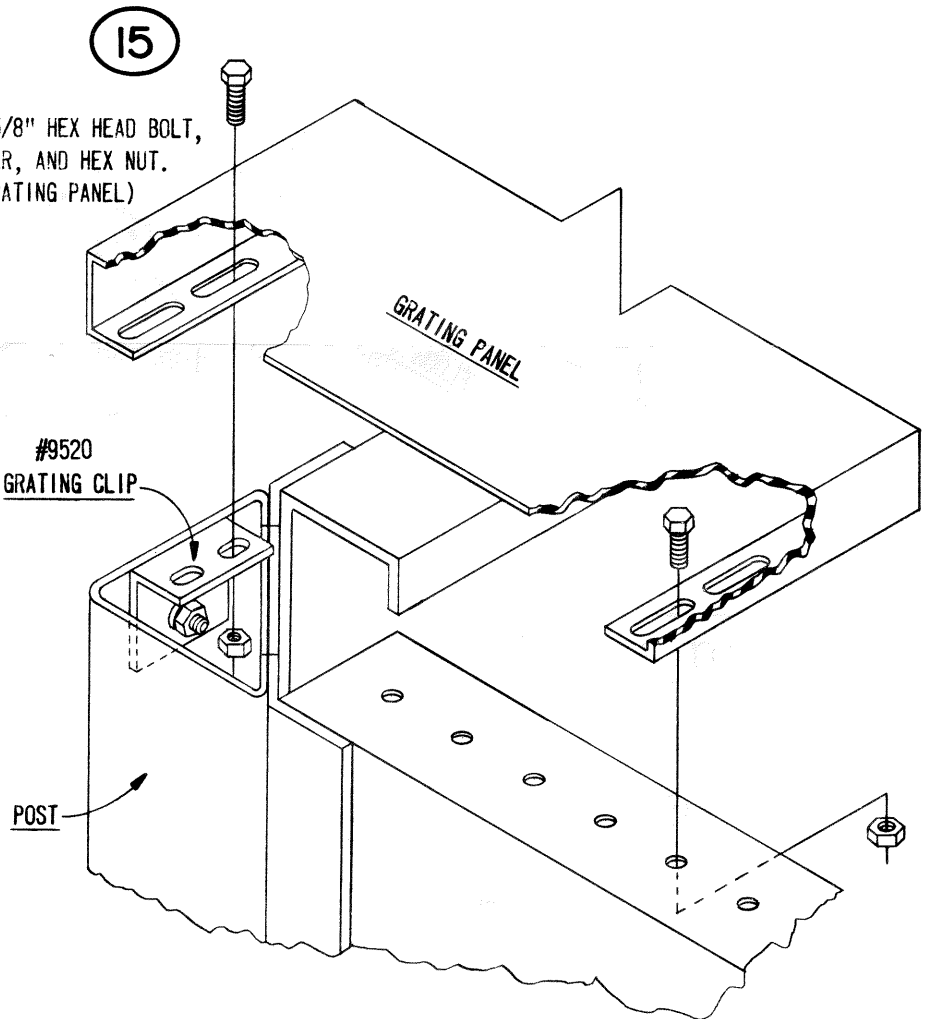
END VIEW



CLIP LOCATION
AND ASSEMBLY



GRATING DETAIL



STAIRWAY APPLICATION

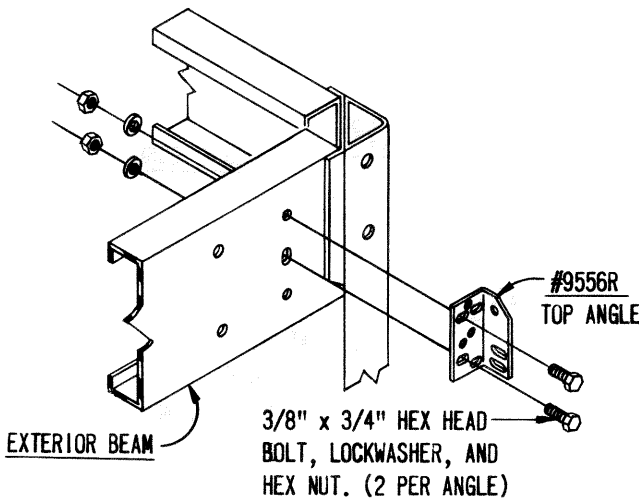
ASSEMBLING STAIRWAY TO THE MEZZANINE FRAMING

Step 1. Determine where stairway is to be located on framing.

NOTE: All exterior beams are punched for stair assembly.

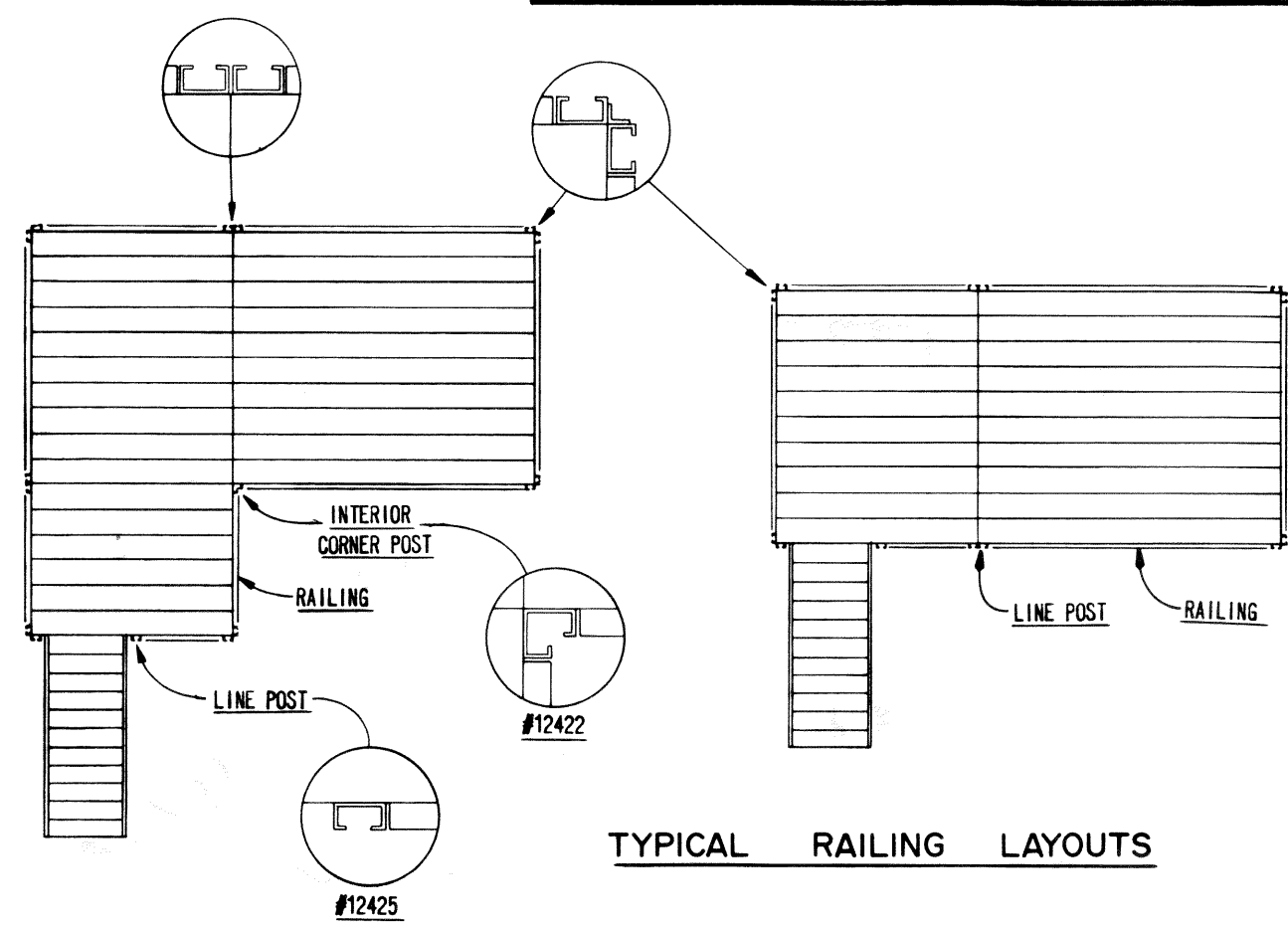
Step 2. Find #9556L & R TOP ANGLES in stairway pack. Fasten both angles to vertical surface of exterior beam, as shown, with 3/8-16 x 3/4" hex head bolts, lockwashers, & nuts.

Step 3. Assemble stairway complete. See DRAWING #41334 or #41466.



BOLT ON #9556L&R TOP ANGLE USING HOLES AS SHOWN. SEE DRAWING #41334B FOR STAIRWAY ASSEMBLY INSTRUCTIONS.

EQUIPTO GENERATION III MEZZANINE RAILING SYSTEM



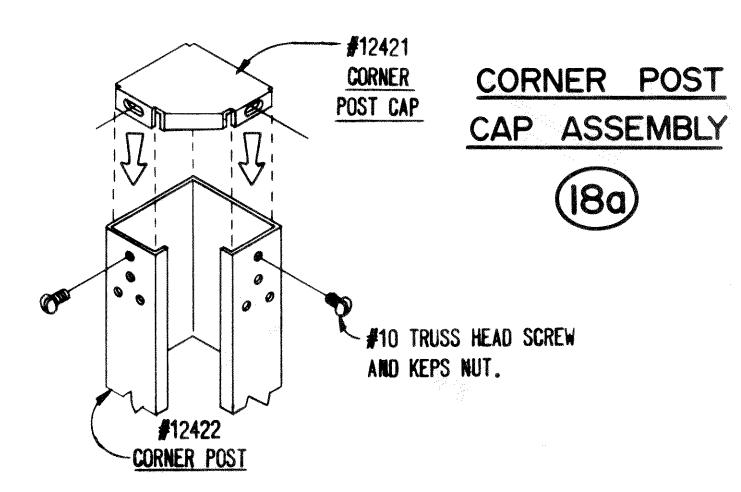
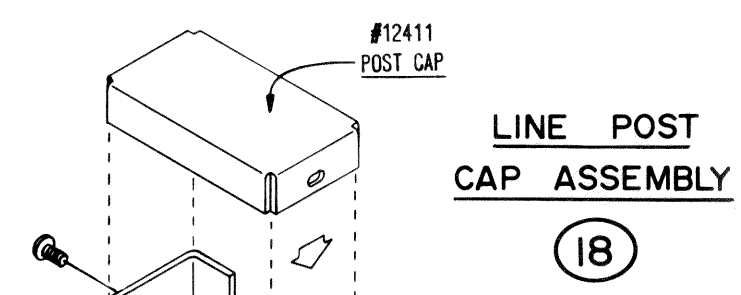
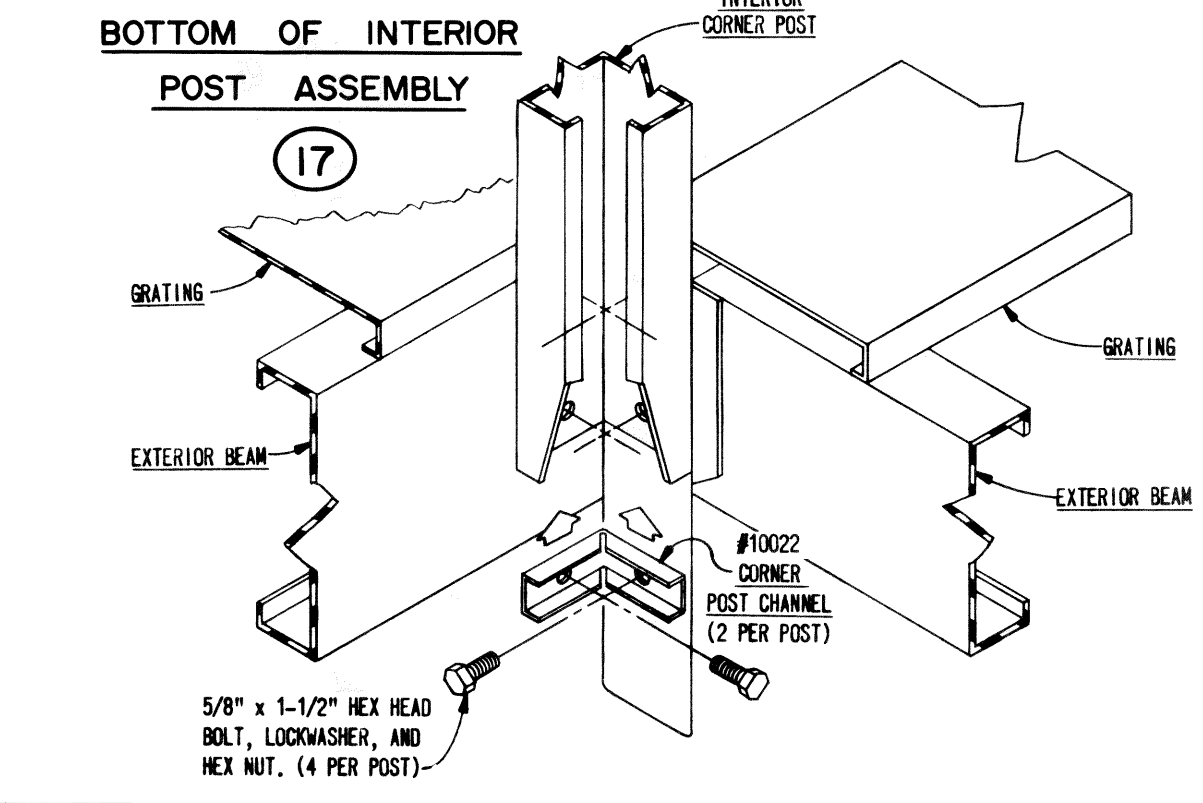
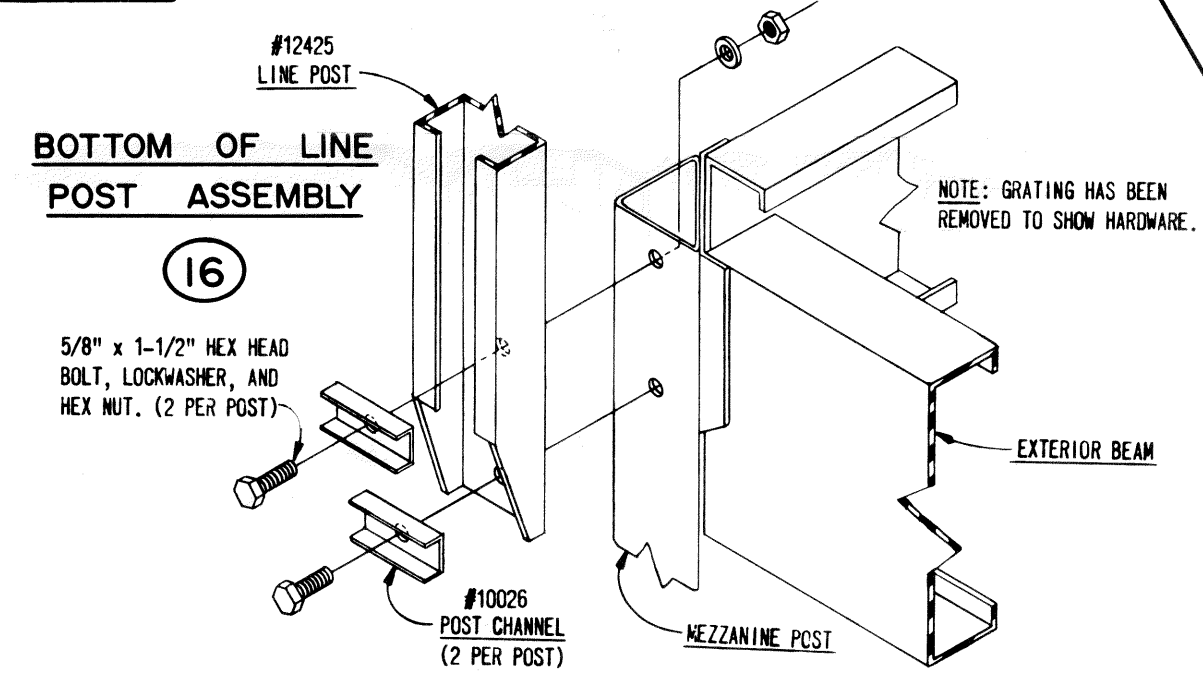
TYPICAL RAILING LAYOUTS

MEZZANINE RAILING AND KICKPLATE ASSEMBLY
Step 1. Fasten Railing Posts to top end of all perimeter mezzanine support columns. See DETAILS 16 & 17. Do not tighten bolts until railing is complete. **NOTE:** All outer corners of mezzanine have two (2) line posts at 90° to one another.
Step 2. Fasten Top Caps into tops of all posts. See DETAILS 18 & 18a. Where posts are side by side, fasten both caps at center with common bolt and nut. Tighten all cap bolts securely.
Step 3. Insert #9560 Railing Bracket into each end of tubular rail with protruding flanges facing in the same direction. See DETAIL 19.
Step 4. Position Rail Assembly with protruding flanges turned down, between railing posts and fasten in place. See DETAIL 20.
Step 5. Fasten Kickplate Angles to railing posts. See DETAIL 21.
Step 6. Position Kickplate, with flanges turned to outside of mezzanine and fasten to angles. See DETAIL 22. **NOTE:** Fasten longer kickplates to grating support beams as shown in DETAIL 23. Tighten all hardware in railing and kickplates.
Step 7. All outer corner posts are to be fastened together with #9563 Corner Angle near the top of the posts. See DETAIL 24.

GENERATION III MEZZANINE RAILING UNITS
#900020 Series Railing Unit consists of:
2 - Line Posts, 2 Rails, & 1 - Kickplate
#900020C Series Railing Unit consists of:
2 - Inside Corner Posts, 2 - Rails, & 1 - Kickplate
#900020B Series Railing Unit consists of:
1 - Line Post, 1 - Inside Corner Post, 2 - Rails, and 1 - Kickplate.
Length of Railing Unit is indicated by the last two digits of the unit number. Example: #90002008 (96")
Shown below is a list of 2 digit numbers that must be added to the Railing Series number to insure proper overall length of unit:

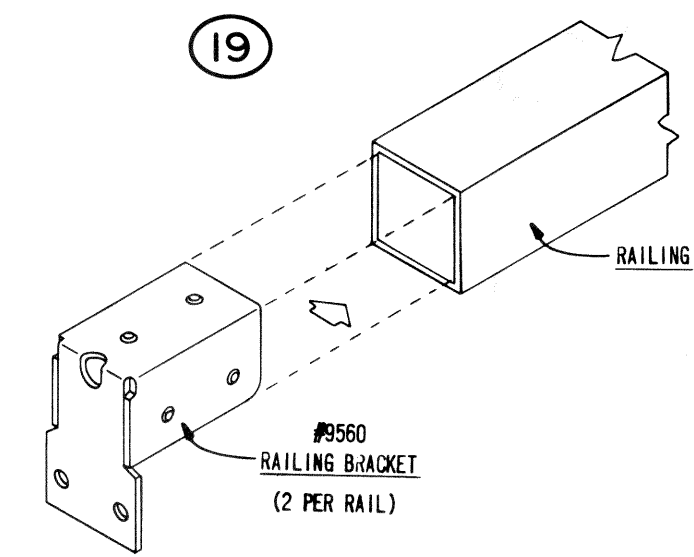
01.....20" length	07.....68" length
02.....28" "	08.....96" "
04.....48" "	09.....76" "
05.....52" "	10.....120" "
06.....72" "	12.....144" "

POSTS

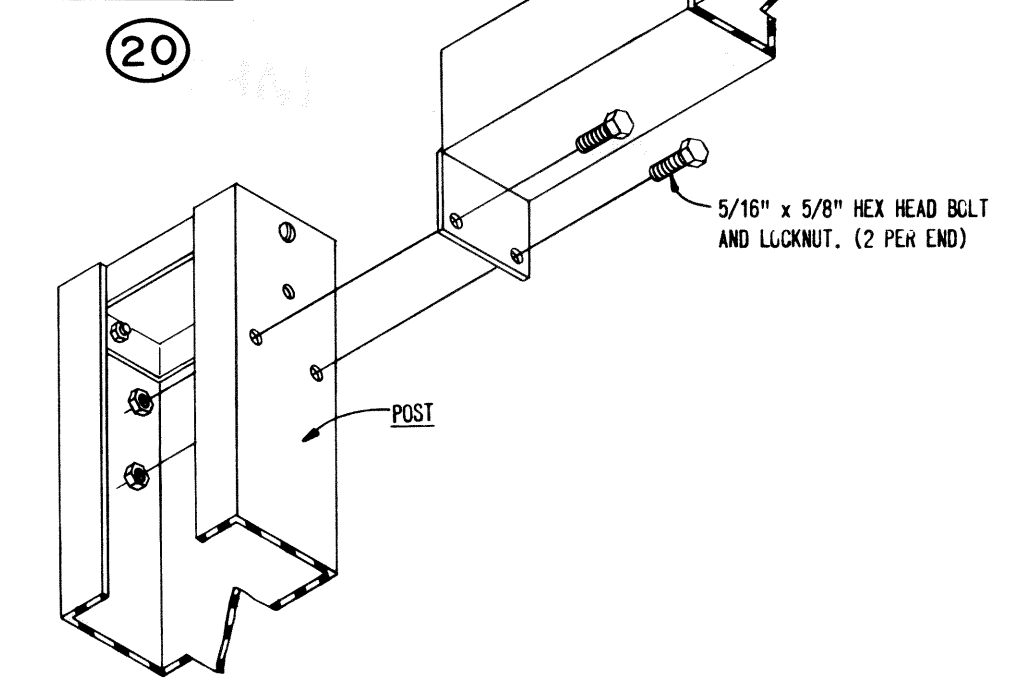


RAILINGS

RAIL & BRACKET ASSEMBLY

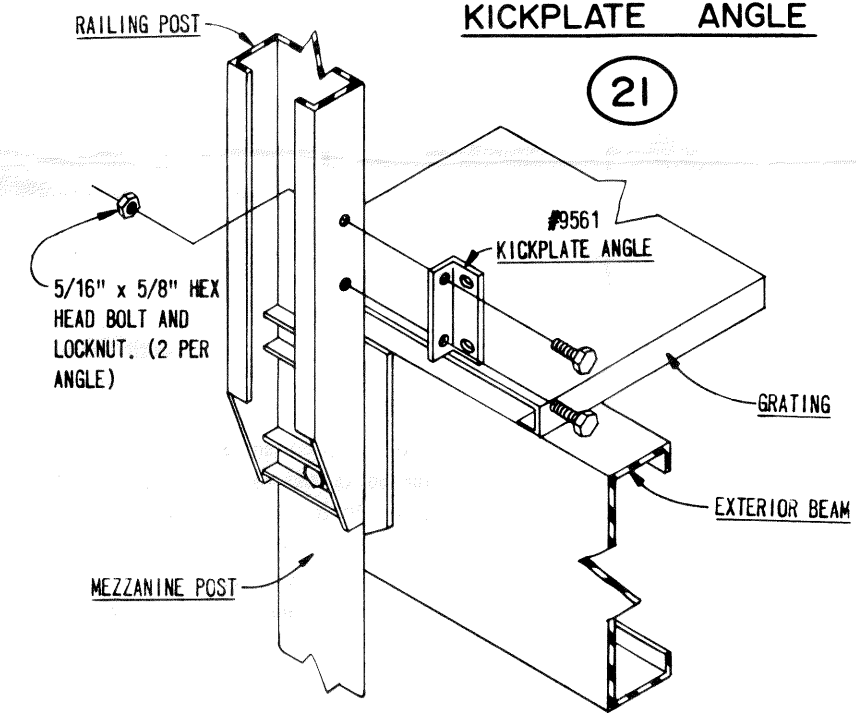


RAIL & POST ASSEMBLY

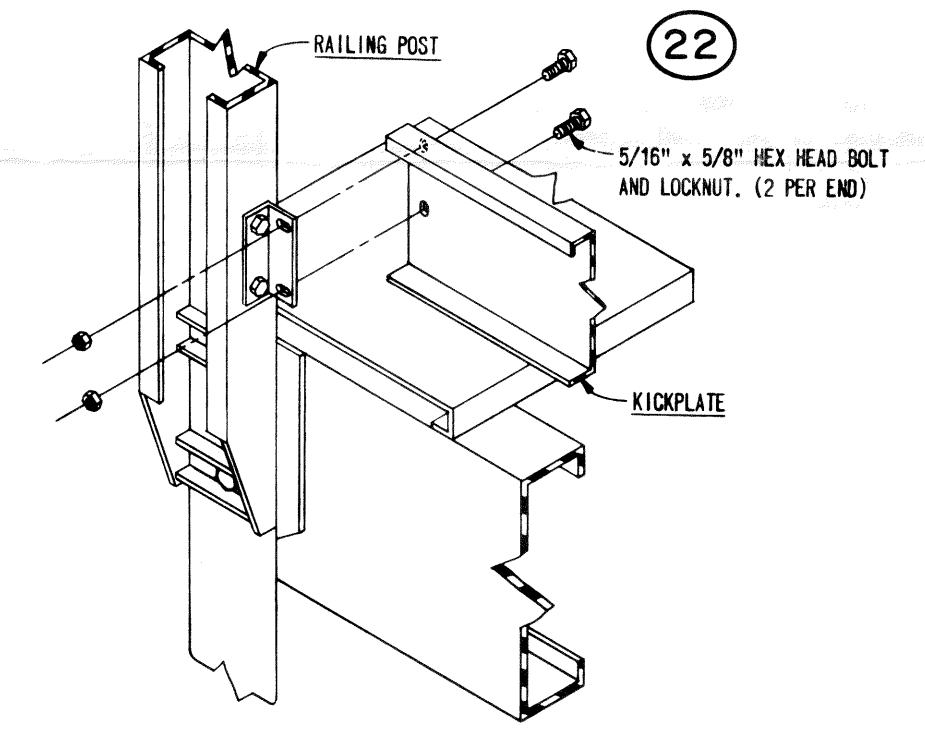


KICKPLATES

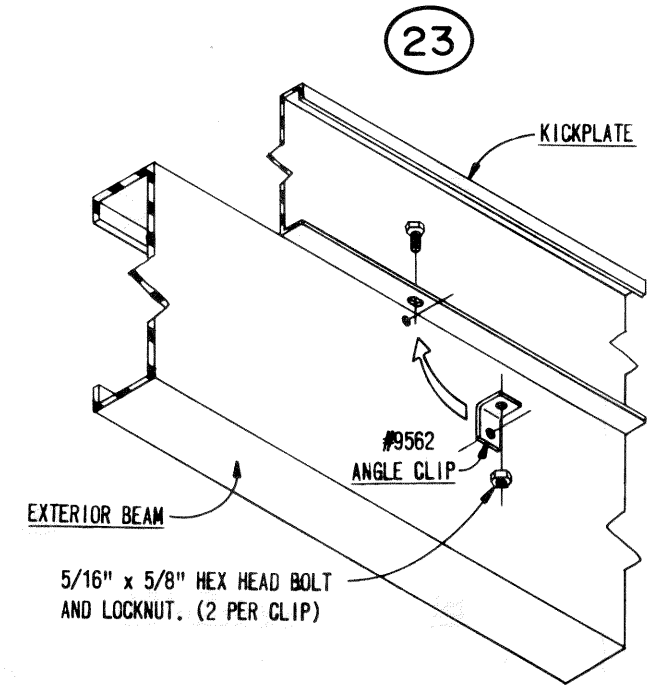
MOUNTING KICKPLATE ANGLE



KICKPLATE ASSEMBLY

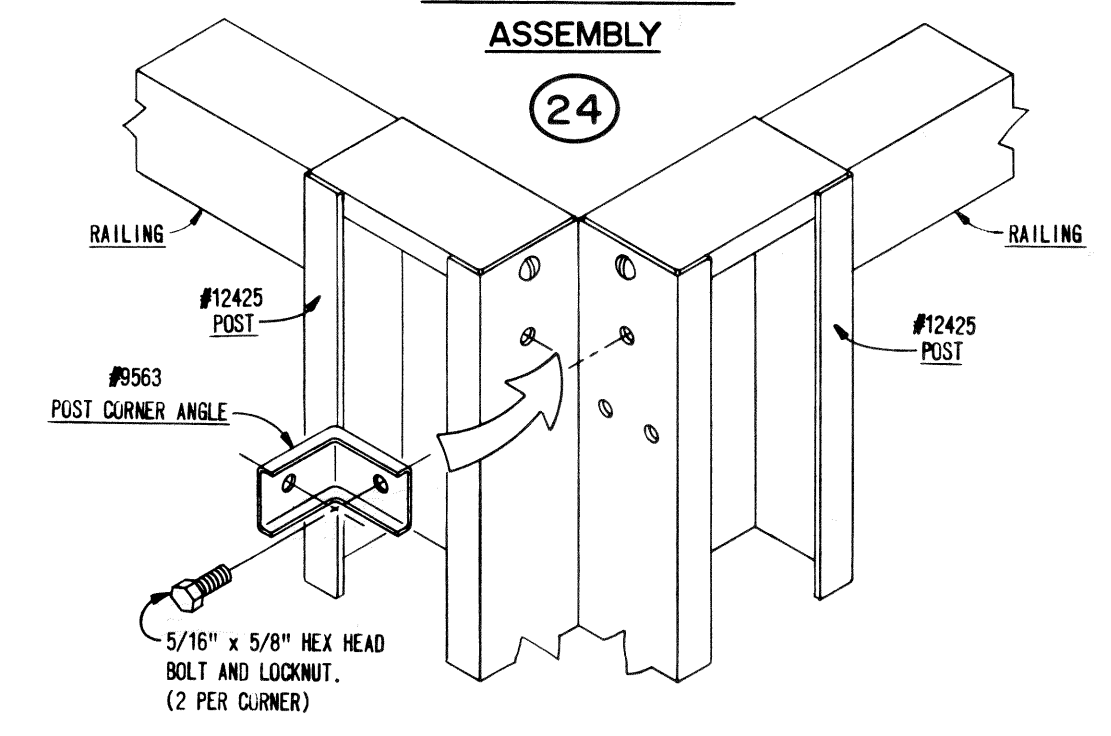


KICKPLATE ANGLE CLIP ASSEMBLY



CORNERS

OUTSIDE CORNER ASSEMBLY

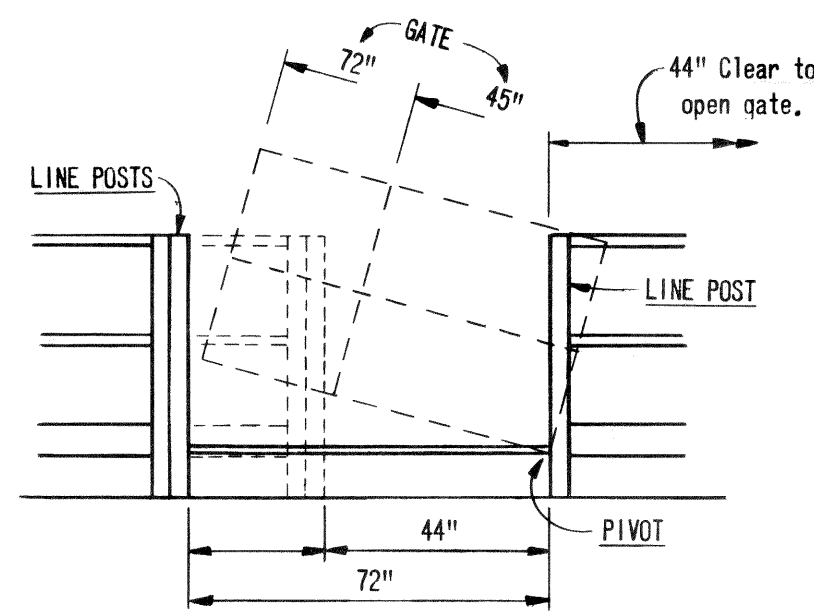


DROP GATE ASSEMBLY

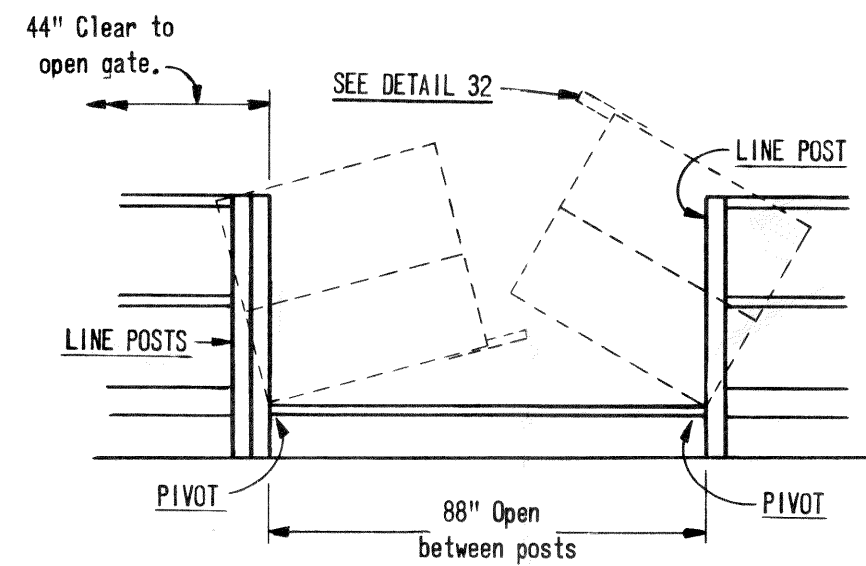
781346 GATE 45" (3'-9")
781366 GATE 72" (6'-0")
781386 GATE 90" (7'-6")

45" GATE: 44" BETWEEN POST
72" GATE: 72" BETWEEN POST
90" GATE: 88" BETWEEN POST

45" and 72" DROP GATE

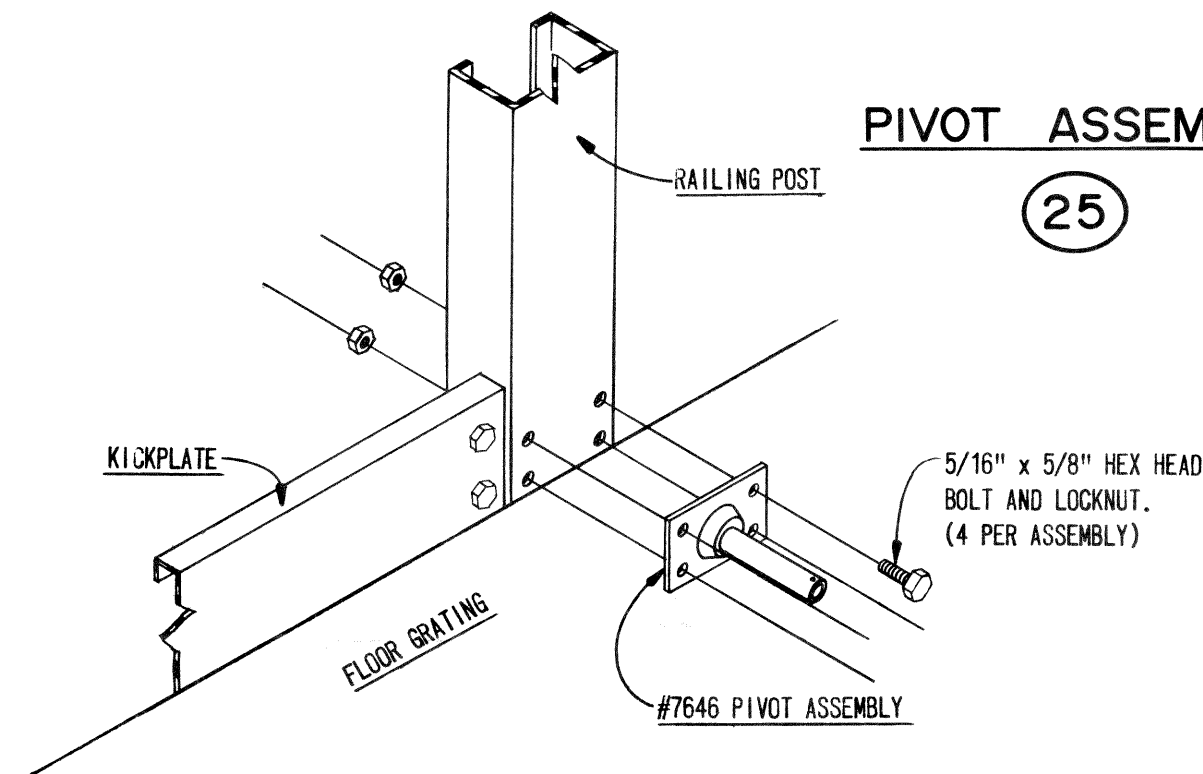


90" DROP GATE



PIVOT ASSEMBLY

(25)

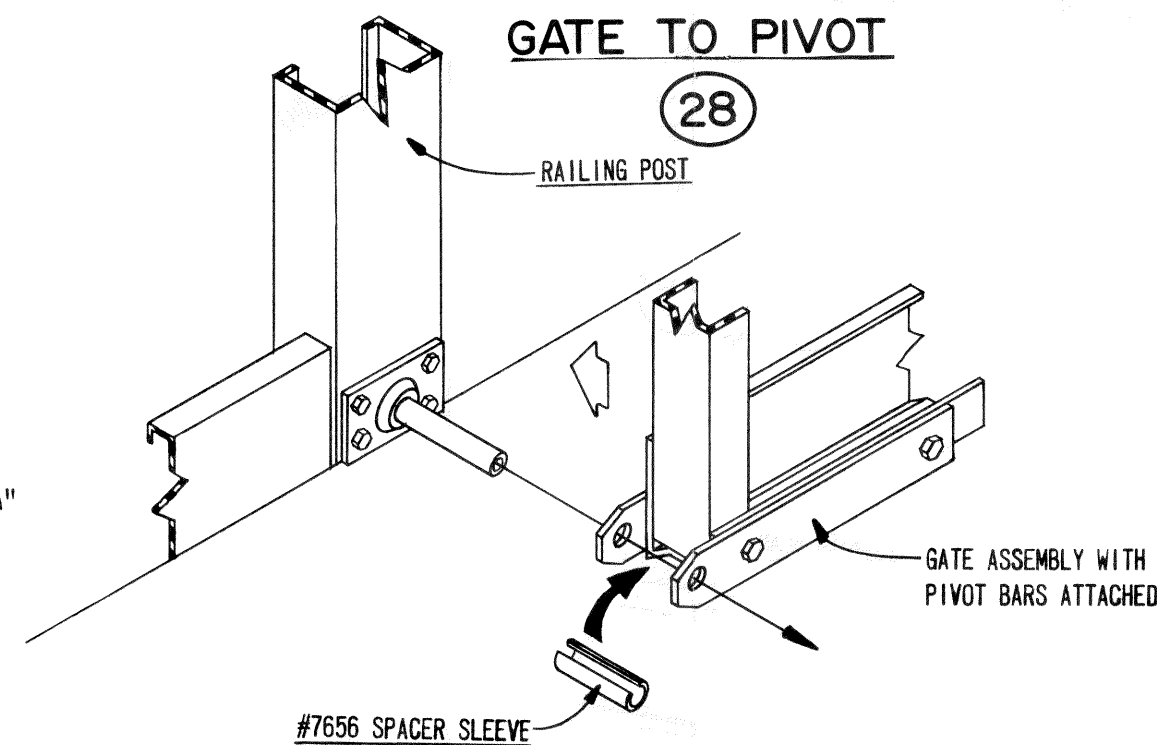


DROP GATE ASSEMBLY

- NOTE: Post that is to have Pivot Assembly attached cannot be less than 44" from any corner on the mezzanine.
- Step 1. Fasten the pivot assembly to the railings post just above the floor grating as shown in DETAIL 25.
 - Step 2. Fasten Pivot Bars to each side of gate at the bottom. Note the different mounting holes in DETAILS 26 & 27. Do not tighten any bolts until gate is complete.
 - Step 3. Stand gate upright on the grating with Pivot Bars to the bottom. Slip gate pivot bars and spacer over pivot rod bolted to the railings post.
 - Step 4. Slip the triangular shaped Support Bar into position and insert the Cotter Pin. See DETAIL 29.
 - Step 5. Gate and Rail Stops must be fastened in place for the 44" and 72" Gates. See DETAILS 30 & 31. Lock Channels are to be installed on 90" Gate as shown in DETAIL 32.
 - Step 6. Tighten all Gate hardware and test the pivoting.

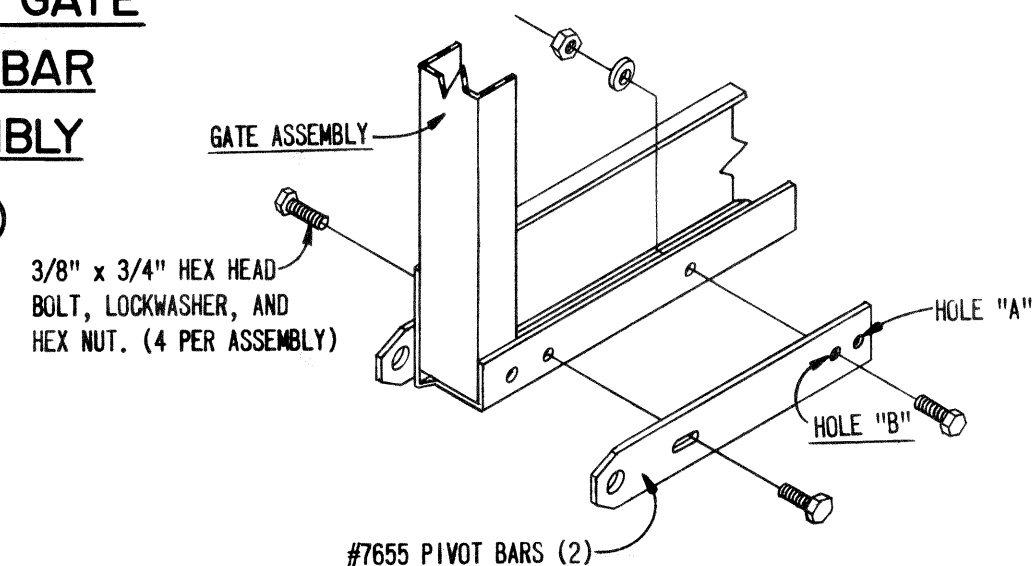
GATE TO PIVOT

(28)



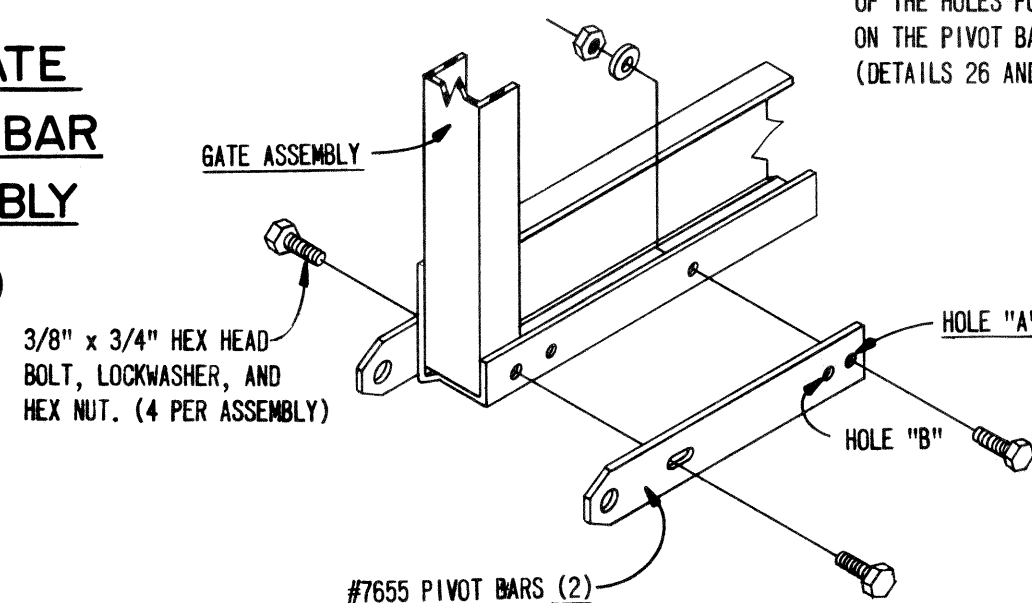
45" & 90" GATE PIVOT BAR ASSEMBLY

(26)



72" GATE PIVOT BAR ASSEMBLY

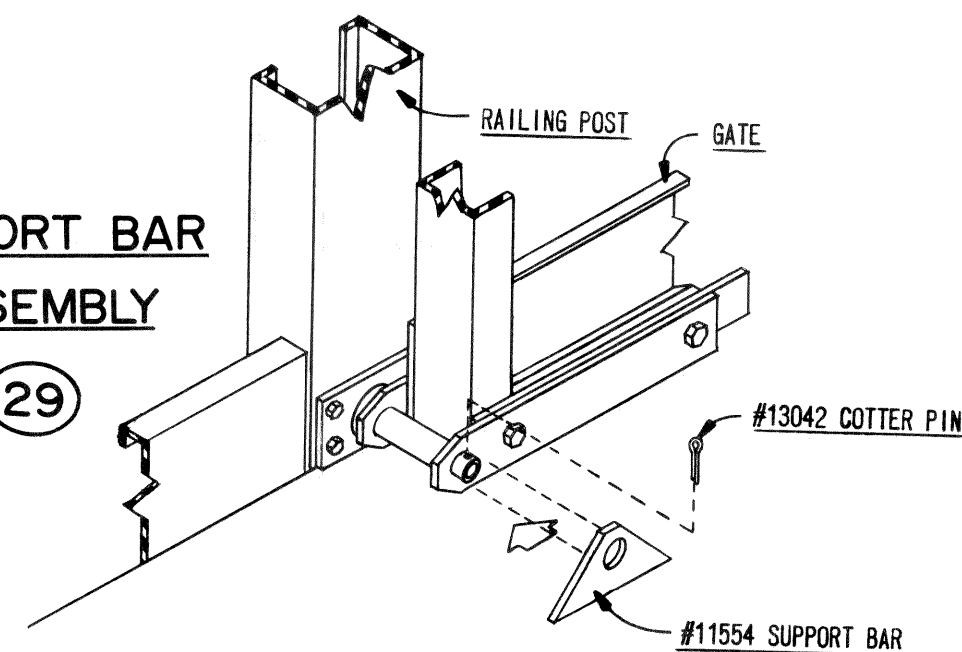
(27)



IMPORTANT NOTE THE LOCATION OF THE HOLES FOR THE HARDWARE ON THE PIVOT BAR ASSEMBLIES. (DETAILS 26 AND 27)

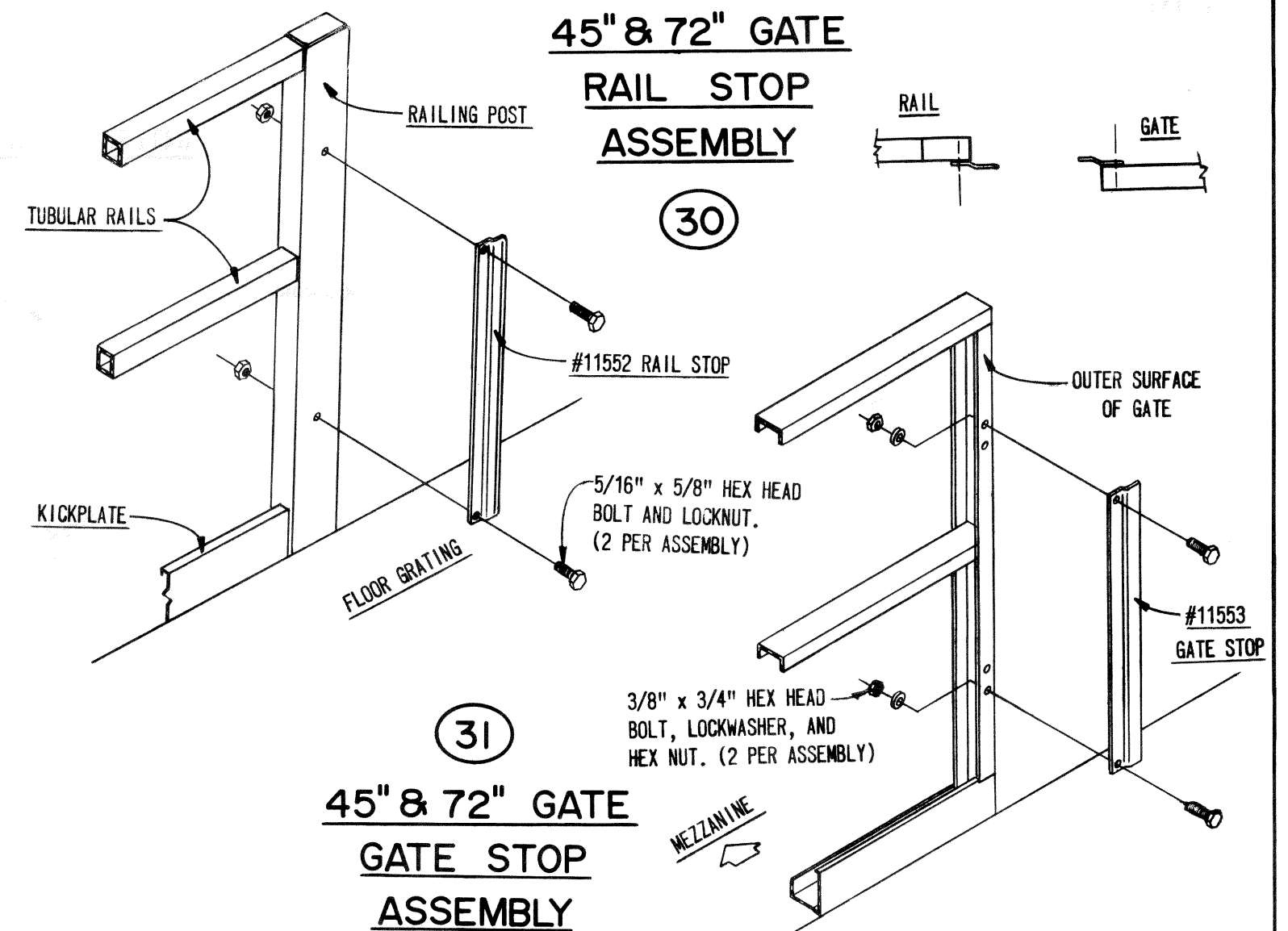
SUPPORT BAR ASSEMBLY

(29)



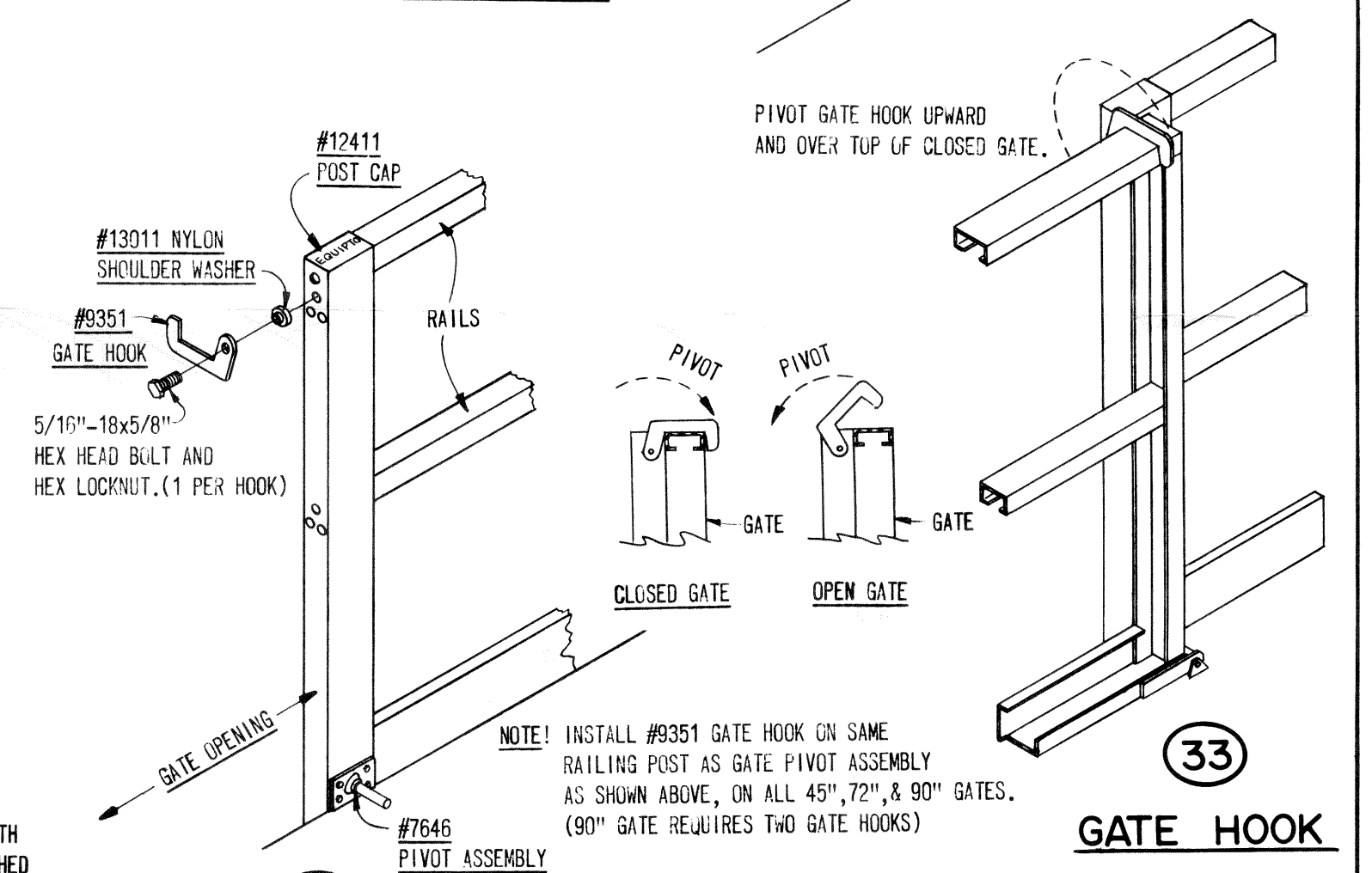
45" & 72" GATE RAIL STOP ASSEMBLY

(30)



45" & 72" GATE GATE STOP ASSEMBLY

(31)



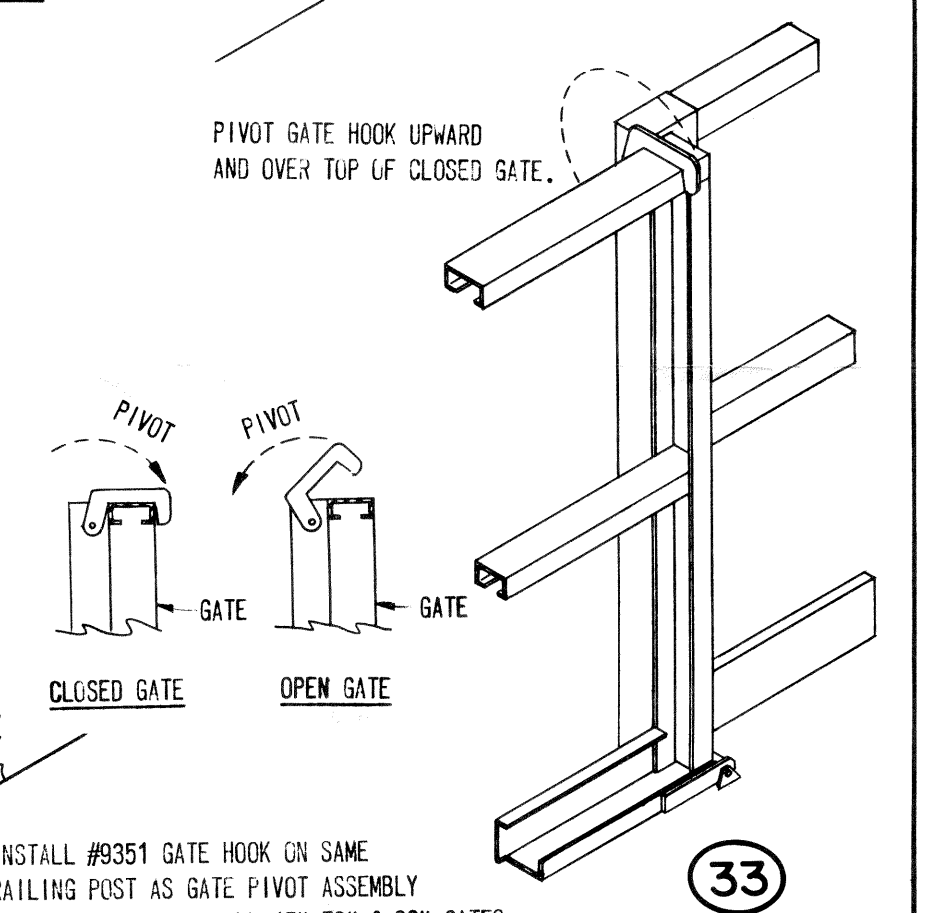
GATE HOOK ASSEMBLY

(32)

NOTE! INSTALL #9351 GATE HOOK ON SAME RAILING POST AS GATE PIVOT ASSEMBLY AS SHOWN ABOVE, ON ALL 45", 72", & 90" GATES. (90" GATE REQUIRES TWO GATE HOOKS)

GATE HOOK OPERATION

(33)



90" GATE GUIDE BAR & LOCK CHANNEL ASSEMBLY

(34)

